

MuseLETTER

Minnesota Artists' Association since 1937

Mark Your Calendar

May 17 - Spring Pot Luck and Show & Tell at JuliAnne Jonkers house 6 PM

May Meeting: Sharing Food and Stories

Our annual May potluck and show and tell will be at JuliAnne Jonker's home on Tuesday, May 17, 6 PM. If you missed the party at JuliAnne & Kurt's home last summer you won't want to miss the potluck this time. Their home/studio/garden is an artistic feast for the eyes! Please bring a dish to share and a piece of art for show & tell. Hope to see you all there!



13602 Everest Ave.
Apple Valley, Mn 55124
952-891-2286

Cell Phone Photography Presentation, April 19, 2022

By Maggie Merkow

Charles Hezsely (a local photographer) deftly guided us through the many ways that the cell phone can be used to create photographs. The presentation began with beautiful, professional cell phone images that he had captured, mostly from Como Park. The evening was filled with useful information that was presented in an organized easy-to-understand manner. Particularly interesting were techniques to focus the camera and editing programs that are built into the phone. Further into the lecture, Charles

informed us of some apps that he uses including Snapseed, Enlight, and Repix.

If there are a few tidbits to pass on, they are to not use the zoom to get closer, but to walk up closer to the subject, and to use the portrait mode more often. Thank you, Charles, and Marjorie for the wonderful evening.

And thanks to Ann Sisel and Diane Gilbertson for the treats and coffee.

A little more from Charles

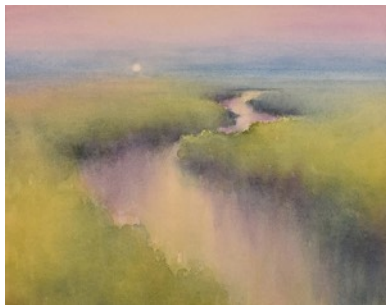
This snowman photo, used for a Christmas card, was taken with my very first iPhone and edited with Snapped.



Member News

Don Aggerbeck

has two watercolors in the Hopkins Center for the Arts Spring Members Exhibition. His watercolor, "Misty Moon," received an Honorable Mention Award in the Northstar Watermedia Society Spring Members Exhibition.



Andrea Canter

It's Art-A-Whirl, May 20-22, the largest art studio crawl in the U.S. throughout northeast Minneapolis.

Andrea Canter's

studio at Casket Arts (#218, 681 17th Av NE) will be open throughout the weekend, 5-10 PM Friday, Noon-8 pm Saturday, Noon-5 PM Sunday), highlighting her new abstract series "Water, Land, Sky" as well as new urban abstracts (mixed media) and more. Throughout the Casket campus will be live music, open studios, demonstrations and food trucks. Visit www.nemaa.org for full information. If you want to avoid the crowds and parking issues, Andrea invites you to Second Saturday on May 14, 11 AM- 4 PM, for a full preview of work in her studio, with live music (jazz guitar from Joel Shapira) in the early afternoon. Many other studios will be open.

Daniel Hendricksen has a large vertical landscape painting "Kaposia Autumn" in the current show, "Call-Together" at the AZ Gallery in Saint Paul. AZ is a participant in the Lowertown Art Crawl, May 13-15, with artist reception on Saturday, May 14,



6-8 PM. Contact www.theazgallery.org for details. He also has three abstract paintings in a group show "Welcome Voices" at Lutheran Church of the Resurrection in Roseville, through June.

Resurrection has a new gallery space open publicly evenings of "Third Thursdays" and at other general church service times. Contact www.lcrelca.org for details or to arrange a viewing appointment.



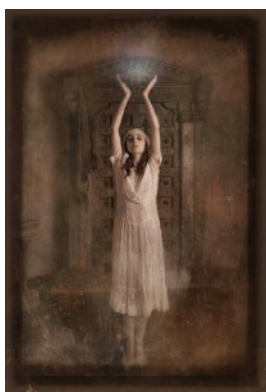
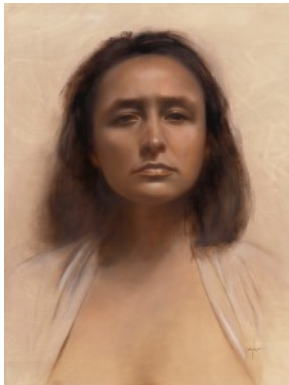
Sonja Hutchinson has earned Signature Status in the Red River Watercolor Society as of this year's National Juried Exhibition. Her painting "On a Roll" was selected for the Chroma display at the airport in the Concourse C Gallery in Terminal 1 June - December 2022.

The display includes work from 60 artists from the NE Minneapolis Arts District.



Member News continued

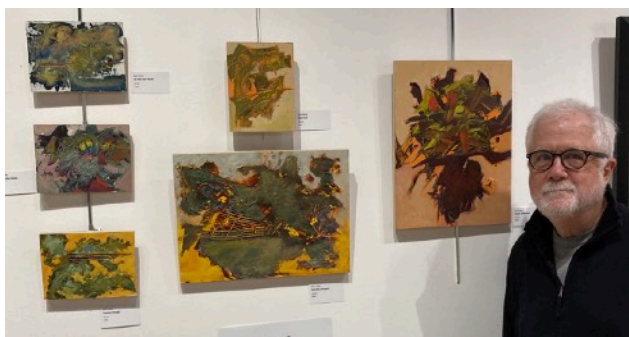
JuliAnne Jonker is a new Associate Member of the Allied Artists of America. She was elected membership in the American Artists Professional League. Her painting, "O'Keeffe" was included in the juried members exhibit.



"The Alchemist" will be exhibited at the Salmagundi Club in New York, May 2-14 as part of the Photography Today juried exhibit.

Bob Keller has 6 pieces included in Minnesota Figure Drawing Collaborative group show at Zeller Studio in Hopkins. The work is not necessarily figurative as you

can see from the photo below.



Greg Lecker will exhibit paintings at ArtReach St. Croix with artists Tanya Piatz and Charlotte Schuld. Their environmentally focused exhibit will focus on subjects including trees, birds and water. With an opening on May 19, the exhibit will run from May 19-June 25 and include artist talks in June. Their exhibit will be accompanied by a Climate Fiction book discussion that revives a past Big Read program.



[ArtReach St. Croix](http://www.artreachstcroix.org)

[224 N. 4th Street](http://www.artreachstcroix.org)

[Stillwater, MN 55082](http://www.artreachstcroix.org)

[651-439-1465](http://www.artreachstcroix.org)

<http://www.artreachstcroix.org>

Gallery Hours

Wednesdays - Fridays 10AM-4PM

Saturdays 12-4PM



Ann Sisel's watercolor still life was accepted into the 29th Annual Red River Watercolor Society National Juried Watermedia Exhibition held at the Plains Art Museum in Fargo starting June 22nd.

Visit **Emmy White** at the Northrup King Building for Art-A-Whirl.

1500 Jackson St. NE, Minneapolis, MN, Studio 321

Friday, May 20, 5PM-10PM

Saturday, May 21, 12PM-8PM

Sunday, May 22,
12PM-5PM



Mission

The mission of MAA is to educate, encourage, and inspire visual artists of all mediums and skill levels, offer fellowship and a supportive environment for creativity, and be a vital presence in the community through our programs and exhibitions.

Board Members

President, Jim Geisinger
612-868-7653

Secretary, Ann Sisel
612-275-0774

Treasurer, Wayne Sisel
sisel001@umn.edu

Exhibitions, Marjorie Moody
651-644-0068

Co-chair, Shelly Rottenberg

Programs, Position Open,
maybe you?

Hey, how about becoming a board member and helping out as program chair? You can do it!

Newsletter, Marie Panlener,
panlener@mac.com

Website, Shakun Maheshwari
952-476-6475

Board Members at Large
Jack O'Leary 952-888-0638

Diane Gilbertson

Lindy Lee: A Chinese Australian Artist



"When I began to realise that my life didn't have to be constructed in any particular direction ... that was when I was free from the horror of not belonging." – Lindy Lee

[Lindy Lee explores Chinese-Australian identity in major Sydney exhibition at Museum of Contemporary Art](#)

[The Shanghai Art Factory That's Constructing Massive Public Artworks](#)

[About Lindy Lee](#)