



Minnesota Artists Association April 2017

Upcoming Programs Mark Your Calendar!

April 9, 1-5 PM & April 10, 11 AM
—7 PM, Pick up your artwork at
Banfill-Locke.

April 18, 6:30-9:30 PM, Florence
Hill presentation. Bloomington
Center for the Arts. See
directions below.

May 16, 6-9 PM, Dinner and
Show and Tell at Sylvia
Rudolph's condo party room.

Summer break paint-outs start
the first week in June. Watch for
the schedule in your e-mail.

Directions to the Bloomington Center for the Arts

By Car: From I-35W, exit at 98th
St. and head west on 98th St. for
approximately one half mile to
Logan Ave. S. Turn left onto
Logan Ave. S. and then left into
the first parking lot entrance.
Enter through the doors on the
northwest end of the building
closest to 98th St.

Address: 1800 W Old Shakopee
Rd, Bloomington, MN 55431
Phone: (952) 563-8575



Meet noted Minnesota Artist Florence Hill and join in a discussion of the “What, Why, and then How” of Being a Satisfied Artist.” April 18, 6:30-9:30 PM, at the Bloomington Center for the Arts.

“As artists,” writes Florence, “what subject matter or matters do we gravitate toward? What determines our images? Is it accidental or carefully planned? Do we find ourselves coming back to a certain theme? If so, why or why not? How do we go about getting the final product to meet our expectations? When are we satisfied? After showing some examples of finished pieces and then going through my particular process of developing a painting to satisfaction, this is to be a group discussion of the choices that we make as artists.”



Our 80th Spring Juried Exhibition at Banfill-Locke Center for the Arts was a huge success!! Our juror, Shana Kaplow, did an outstanding job of talking about the show in general, discussing the individual award winners, and then speaking to any artist who wanted comments on his or her work. Shana's comments were not only insightful but educational. I think she helped us to all think about our work in a new way. We had about 75 people in attendance and the MAA board provided the wonderful food, cake and punch! Many thanks to Diane Gilbertson for preparing all the food and displaying it so nicely. Thanks to Edie Karras for adding the guacamole and chips! Thanks to Jeffrey Ebeling, director at BLCA, for hosting our show and providing the paper goods. Terrie Christian and Jeffrey did a wonderful job designing the show. Many thanks to the hanging crew: Rick Mittelstadt, Annie Young, Mandy Bitzegaio, Tom Dimock, Jeffrey Ebeling and Marjorie Moody. Behind the scenes we have Jack O'Leary who makes the entry form & People's Choice tags and Mary Ann Morgan who organizes the information and does the data entry from the entry forms. Congratulations to all the artists in the show and to the award winners! Thank you all for making our 80th anniversary show such a great celebration!! ~Marjorie Moody~

Shana Kaplow's Juror Comments

Thank you Marjorie Moody for inviting me to be the juror, Jim Geisinger, President of MAA, Jeffrey Ebeling, Director of The Banfill-Locke Center for the Arts, and all the artists who submitted work to this exhibition. I know it is no small thing to pour yourself into your artwork, and then bring it forth into the public sphere. It takes honesty and courage to do so. I commend all of the artists for taking the leap of faith necessary to do so. All of the work has so much merit! It's clear that the artists represented here are very committed to engaging in and deepening their work.

Jurying a show is a somewhat subjective process, no matter what anyone says about that. We all come with our own specific histories and various informed and gut responses. That's the beauty of art. Having said that, it's also important to bring an open mind that allows for the understanding of the breadth of visual languages and approaches. It might be helpful to hear how I thought about the criteria I used to make my decisions.

An artwork can succeed based on technical excellence, or it can succeed based on a strong concept, but when the two are working together, and in conversation with each other, something deeper tends to happen. As a viewer, I am interested in being engaged on multiple levels at once. It's also important to me that there is a sense of discovery, development, or improvisation in the work - that technical skill is used where necessary, but also is let go of where experimentation is required. My judgement is not based on any particular stylistic preferences, but instead, I look for work that engages both viscerally and intellectually. The more ways a work makes me "think" and "feel" the better.

Once again, thank you so much for this opportunity! It has been an honor and a privilege that you shared your work with me, and I very much appreciate it!

(Note: for more information about Shana Kaplow, visit her website at: www.shanakaplow.com.)

The Juror's Notes on Individual Winning Paintings



Jake Posey "The Poet" Merit Award

Highly technical, skilled, relaxed hand
A sense of suppleness
A storm brewing within, unease.
Identity of a white man. What is he grappling with?
Nod to classical painting, but unlike the heroic quality of
the classics, this man is vulnerable, struggling
Raises questions about agency, power, burdens



Mary Ann Morgan, "Passages" Merit Award

A dark mood
A sense of the ground shifting beneath one's feet
Fluid + cold with bits of glowing form, something molten
Everything is mutable, unfixed, changeable
A space is offered, yet I am unsure where to step
This sets up a dramatic space that feels discovered
rather than planned
A sense of process



Emmy White, “Biker” Merit Award

Movement + freedom, despite the small and full composition

A sense of the imagination

This is a perpetual present moment

Discovery through process

Layered and transparent - makes me think about time and accumulation

There is a cartoon-like reference but the integrity of mark of the hand and a sense of invention are retained here.

Tactile



Kat Corrigan, “Late Saturday Night” Honorable Mention

Reference to pop art

Lively, fun, active, exuberant - due to color and mark-making

Almost regal, collar of fur, glowing back light

An eagerness extending outward from the eyes

Use of reflected light and color which activates

There is definite control here which belies the bursting energy of the dog

The dog is “on hold” - in a “stay”, ready to burst forward.

Sharp focus in the mind of the dog. Identity here is a personality of energy.



Marjorie Moody, “Rhythm + Blues” Honorable Mention

Playful, improvisational

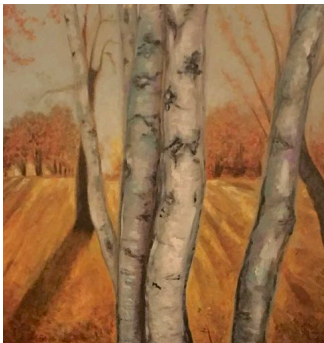
A sense of movement

Natural spaces - trees, mountains

Reminiscent of Chinese landscape paintings

Gesture as a presence

Its small scale reminds me of Bonsai trees, small spaces that open up as vast spaces in the mind



Elena Nikonov, “Autumn” Honorable Mention

Animated sense of light in a natural space

Setting a mood of clarity

Directional movement is coming toward the viewer

Warmth

The trees evoke a sense of bodies, a figurative relationship, a suggestive dance, or a resting quiet

The tree in shadow is encroaching into the foreground - an interesting opposition

A particular place - the place has an identity - a midwestern field

A particular time of day.

It begs the question, Whose space is this? Who is inhabiting it?



Mandy Bitzegaio, “Strong, Beautiful, Faithful” Award of Excellence

Expressive. The figure is in relation to her environment

Fluid boundaries

Catching fleeting light, sense of movement and air, breath.

Green - freshness, natural environment

Making eye contact - a kind of power, agency.

A woman of color - portraits are also about identity, again raising questions about power and self-determination.



Judy Lieber, “My Favorite Alley” Award of Excellence

A very present observation

Letting go of the name of things in order to feel their presence in a physical way

To feel one’s way through a space

Warmth + coolness - can feel temperature

Gesture + structure - a looseness but still holds together as a space and structures

Sharpness + blur

A sensitivity to the beauty of light, space, and surface.



Ann Sisel, “Solar Flares” Award of Excellence

A discovered composition, improvisational, importance of process and the hand

A response in the present moment

Both concrete and fluid, a sense of water

Stillness and movement

Simultaneously figure + architecture.

Like an abstract portrait.

An individual voice—sense of the hand and individual touch, personalized.

Member News



Jack O’Leary (left) had a fine opening on January 5 for his one-man show at the Edina Art Center. **Gary Carabio** (right) had his opening reception for his one-man show also at the Edina Art Center on March 23. Gary’s show runs until April 26. Congratulations to both artists!



KEEP IN TOUCH! Please send news, announcements, and JPGS of your latest work to Jeanne Emrich, your newsletter editor, at jemrich@aol.com or by snail-mail to Jeanne Emrich, 6566 France Avenue South, #508, Edina, MN, 55435). The deadline is the 20th of the month.

KEEP IN TOUCH! Please send news, announcements, and JPGS of your latest work to Jeanne Emrich, your newsletter editor, at jemrich@aol.com or by snail-mail to Jeanne Emrich, 6566 France Avenue South, #508, Edina, MN, 55435). The deadline is the 20th of the month.