



Minnesota Artists Association October 2016

Upcoming Programs — Mark Your Calendar!

October 10 Deadline for the MAA Fall Show entry forms to be sent in.

October 26 MAA Fall Show opening reception at the Ames Center, 6-8 PM. Bring your friends!

November 15 Susan Frame— Sumi-e/Chinese brush painting demo.

Your dues are due! Please send a check made out to the MAA for \$25 and send it to Diane Gilbertson, 5275 Oxford St. N., Shoreview, MN 55126
Remember, your dues must be paid for yours to be in the members' show.

DIRECTIONS to the Ames Center: The address is 12600 Nicollet Avenue, Burnsville, MN 55337. From Hwy 494 and 35W, follow 35W across the Minnesota River. Turn onto Cty Rd. 13 toward St. Paul. Turn right onto Nicollet Avenue Turn right at the stop light by the gas station and then left to go to the center. Parking is on the street and on top of and in a parking ramp on the north side of the center.

We return to the Ames Center!



We are pleased to announce our great good fortune in being able to have our fall members' juried exhibition at the beautiful Ames Center in Burnsville! Their spacious and well-visited contemporary gallery is right next to their theatre, so our work will get considerable exposure the entire run of the show. All this means that, first, be sure to enter the show by October 10 (see the entry form sent with this newsletter), and, second, come to our opening reception on October 26, 6 - * PM. Oh, and if possible, bring a treat for the reception buffet table! We had two long tables of treats there a couple of years ago, which made for a spectacular party atmosphere. Here are the key dates to remember:

Exhibition Dates: October 26 - December 3, 2016

Entry Form Deadline: Monday, October 10, 2016 (No late entries)

Deliver artwork: Monday, October 24, 2016, 9:00 AM - 5:00 PM.

Address & Telephone No: 12600 Nicollet Avenue Burnsville, MN 55337 (952) 895- 4685

Juror: Frank Wetzel

Opening Reception & Awards: Wednesday, October 26th, 6:00 - 8:00 PM

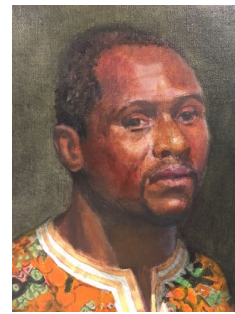
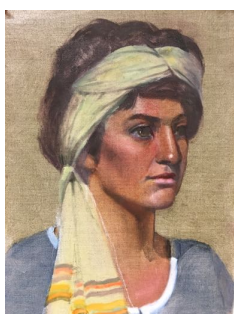
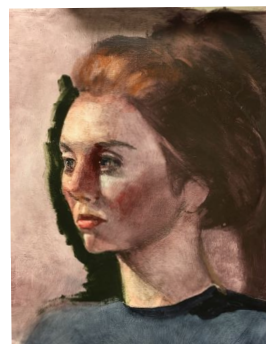
Pick up art work: Sunday, December 4, Noon - 4:00 PM

Our hearty thanks to Jack O'Leary, Mary Ann Morgan, Terrie Christian and Marjorie Moody for securing this wonderful venue and making it all happen! Thanks also to Diane Gilbertson for making our hospitality hospitable! Please consider lending a helping hand yourself, too. Call Marjorie at 651/644-0068 or e-mail her at marjoriejmoody@aol.com. Help is needed during drop-off and pickup days and also, to help hanging the show on Tuesday, October 25 starting at 9 AM. It's a group effort and it's fun and a great opportunity to make new friends!

IT WAS A GREAT START FOR THE FALL SEASON: SEPTEMBER'S FRANK WETZEL DEMO



Frank Wetzel (left) launched our fall lineup of programs with a fine master class in portraiture, using a color sketch in oil in mid-stage of completion and working from memory (right). He also brought in numerous sketches (below) from his weekly portrait classes, each done in oil or watercolor in three hours.



MEMBER NEWS

Welcome new members Kumiko Beggs and Ann and Wayne Sisell! Also, welcome back Lucy Ann LeMay!

Correction! An invitation to exhibit at Curran's restaurant. Tom Halseth has signed up for exhibiting his work at Curran's Restaurant on Nicollet and 42nd St. in Minneapolis for the months of October and November. Emmy White has signed up for December and January. If you would like to sign up for February and March or beyond that, contact Emmy at emmywhite@gmail.com.

Congratulations to Lee Randall, whose drawing, "Essence" also made it into the 2016 State Fair Art Exhibition, in addition to those already mentioned in our September newsletter. We are a talented bunch!

The studios of Emmy White & Cal deRuyter (321), Tom Dimock, Mary Ann Morgan, Greg Lecker and Eileen France (183), Patricia Jacobsen (351), Rita Corrigan & Marjorie Moody (392), Laurie Salmela and Mandy Sadler (425) will be open for First Thursday on October 6, 5-9 PM at the Northrup King Building (1500 Jackson St. NE, Minneapolis).

THIS AND THAT

Just published: *Reductionism in Art and Brain Science: Bridging the Two Cultures* by neuroscientist Eric Kandel. The author explores how science can inform the way art is created and perceived. Here's a quote [amazon.com](https://www.amazon.com)'s description of the book: "Kandel illustrates how reductionism — the distillation of larger scientific or aesthetic concepts into smaller, more tractable components — has been used by scientists and artists alike to pursue their respective truths." Read more on [amazon.com](https://www.amazon.com).



**In Memory
of
Ted Maltese**

Ted showing his portrait of long time MAA member Carol Pihl at a MAA meeting in 2009.

We lost a good friend this past week with the passing of Ted Maltese at the age of 92. It gives me pause to reflect on what he meant to me and perhaps others. I felt especially close to Ted because he seemed like a father I never had. Ted showed me what a man could be; full of warmth, kindness, goodwill, gentleness and love. It simply emanated from him wherever he went and people could sense it. He was comfortable in his own skin and could strike up a conversation with almost anyone. He was "all in" with the devout Catholicism he practiced and willingly gave, gave and gave to the various charities and organizations he served.

Although I never saw Ted in "grump mode" he could, at times, be opinionated and critical and he never seemed to embrace the messy American democracy he lived in. He seemed to yearn for a society where everyone was on the same page, one not quite so diverse. Call him old fashioned. But perhaps one of his most redeeming qualities was that he never took anything too seriously and could always laugh at it all.

And laugh he did! So many times I remember Ted telling a bad joke and he would immediately start guffawing after it. Maybe the joke wasn't that funny but watching him laugh uncontrollably got me laughing. It was contagious. I don't think I've ever met anyone who enjoyed laughing more than Ted! Once, out painting in Wisconsin, we were at a mill site. Ted said we were "Down at the darn dam near Danbury" (all "d" words.) Then we were "Drawing down at the darn dam near Danbury." When we were finished, we were "Done drawing down at the darn dam near Danbury" and so on. Over and over he would say it, guffawing between each repetition. Ted, I'll be laughing whenever I think of you. R.I.P. you beautiful soul!

Greg Lipelt

Many thanks to Greg for his reflection. Ted was a longtime member of MAA, made his living as a commercial artist and contributed often to our newsletters over the years with his wonderful drawings and humor. He was a great artist and often painted outdoors with fellow MAA members. He was a regular Wednesday morning attendee at Curran's Restaurant enjoying the camaraderie of other artists. He will be greatly missed! Marjorie Moody

KEEP IN TOUCH! Please send news, announcements, and JPGS of your latest work to Jeanne Emrich, your newsletter editor, at jemrich@aol.com or by snail-mail to Jeanne Emrich, 6566 France Avenue South, #508, Edina, MN, 55435. The deadline is the 20th of the month.